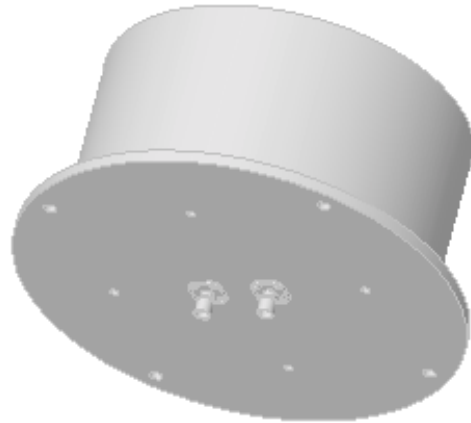


Epsilon 10 Microdesign

CC1725xx.10

1.7 – 2.5 GHz Coffee Can Horn

The CC1725xx.10 is a wideband circularly symmetric cavity-backed low profile horn antenna available in linear, vertical/horizontal, or RHCP/LHCP polarities. Bottom or side mount connectors are available. Mounting is provided via integrated base flange. These horns are used in space limited fixed installations, in ENG applications, and as feed horns in offset and symmetrical parabolic reflectors.



SPECIFICATIONS

CC1725.10	1.7-2.5 LINEAR
CC1725RL.10	1.7-2.5 RHCP/LHCP
CC1725HV.10	1.7-2.5 HOR/VERT
Gain @ 2.1 GHz:	10 dBi
HPBW H-plane	68°
HPBW E-plane	64°
First SL H-plane	none
First SL E-plane	19 dBc
Axial Ratio	2.5 dB
VSWR	1.5 : 1
Power	40W cw
Weight	15 oz
Finish	White Polyurethane

