



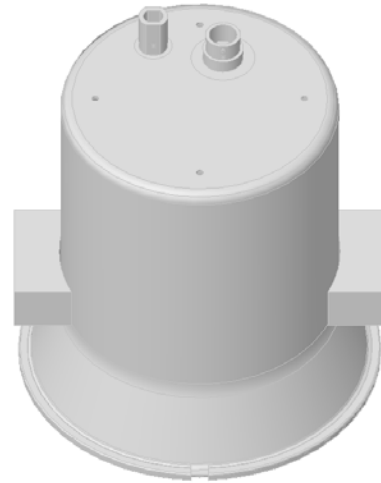
Epsilon 10 Microdesign

F1727RLVH.4P

FOUR POLARITY FEED

1.7-2.7 GHz RHCP/LHCP/VERT/HORZ

The F1727RLVH.4P is a wideband four polarity feed providing remotely switchable operation in each of four modes. The default mode (de-energized) is RHCP. Two polarity remote or manually switchable, and one polarity versions are also standard. This feed may be effectively employed in either offset or symmetric reflectors with f/d ratios between .3 and .5. Switching is facilitated via an integrated antenna/stripline/transfer switch hybrid providing added reliability, eg. only a single RF cable is required. The F1727RLVH.4P is designed to transmit up to 100 W cw.



SPECIFICATIONS

F1727RLVH.4P	4 POL
F1727RL.2P	2 POL
F1727RL.1P	2 POL manual select
F1727VH.2P	2 POL
F1727VH.1P	2 POL manual select
F1727.1P	1 POL
Power Capabilities	100 W cw
CP Axial Ratio	< 1.5 dB
VSWR	< 1.7 : 1
Weight	4.5 lbs
Finish	White Polyurethane
Control	12 / 28V PT06A-12-10S
Environmental	Leak proof Surge protected

