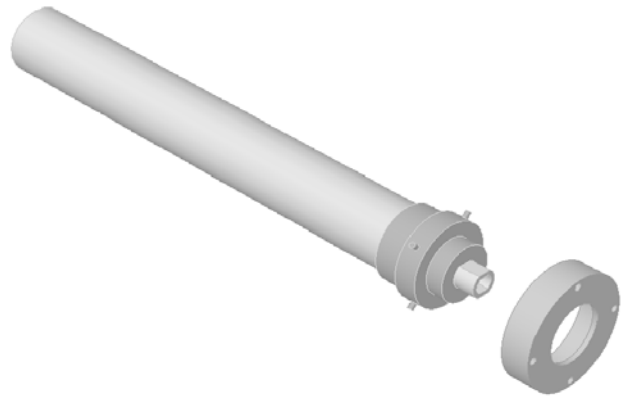




**Epsilon 10 Microdesign**

**Fxyy.24/30/48**  
**3.0-16 GHz Tubular Feeds**  
**RHCP/LHCP or Linear**  
**Quick Release or Fixed Mount**

The Fxyy.24/30/48 is a linear or circular feed designed for 24", 30", and 48" Epsilon reflectors. Linear vertical or horizontal polarities are manually switchable via quick release detent position. RHCP/LHCP is available with internal hybrid. RHCP or LHCP Only polarity is available with internal phase card. The quick release configuration (shown) allows for fast band changes when spectrum availability demands require it. Fixed mounts are available for semi-permanent installations.



SPECIFICATIONS		
Bands:	F3040.30 F4060RL.30 F6080R.24 F8090.48 F12-15.30	3.0-4.0 GHz 4.0-6.0 GHz 6.0-8.0 GHz 8.0-9.0 GHz 12-15.5 GHz
Polarities	Linear, RHCP/LHCP, RHCP only	
Axial Ratio	1 dB max	
Phase Center	12"/12"/18"	
Power	40W cw	
Connectors	N(f), or SMA(f)	
Weight	8 oz	
Finish	White Polyurethane	
Mount	4 - #8 on 2.35" Dia Cir	
Dish Center	1.75" hole std	

